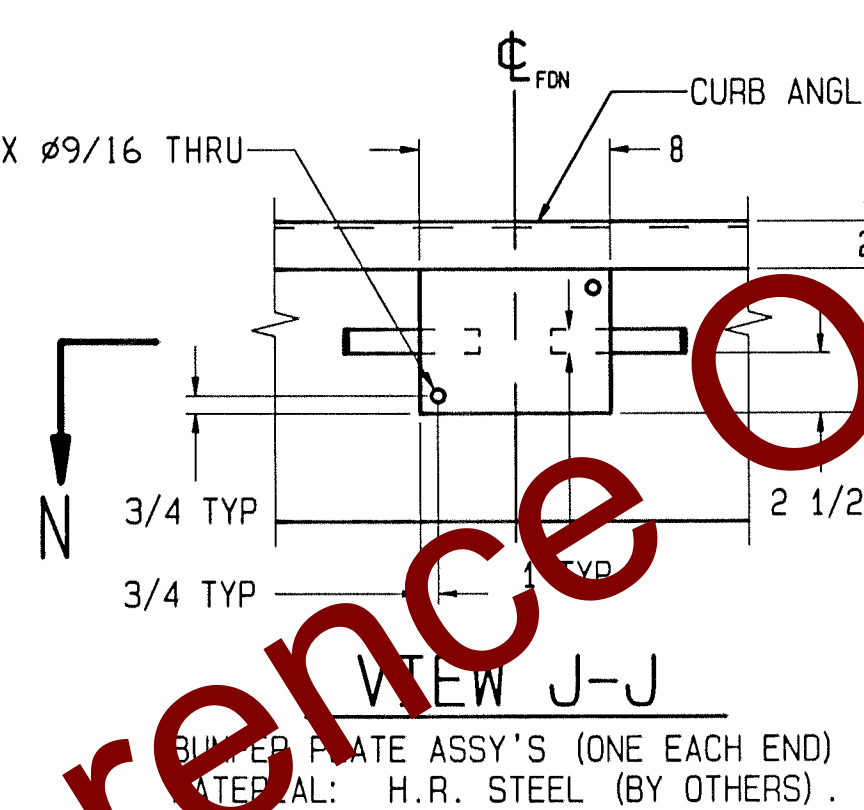
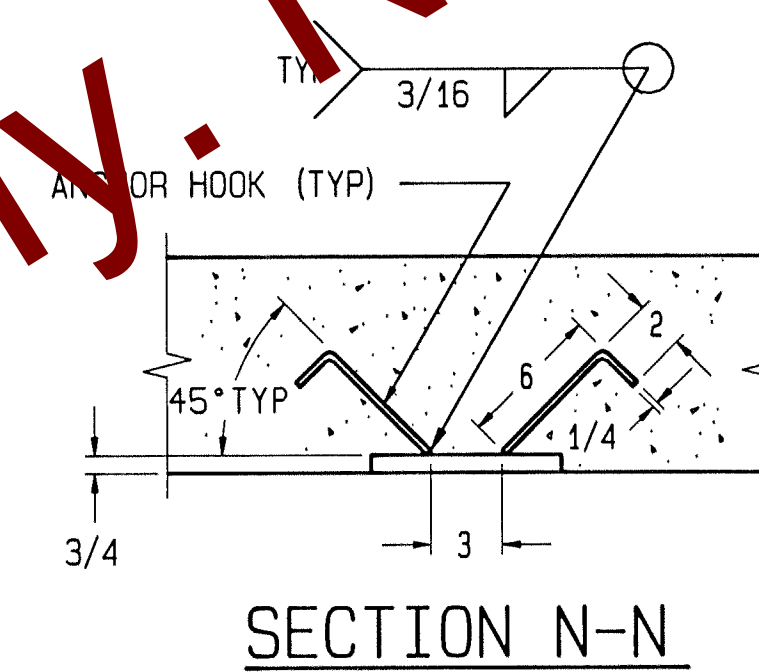


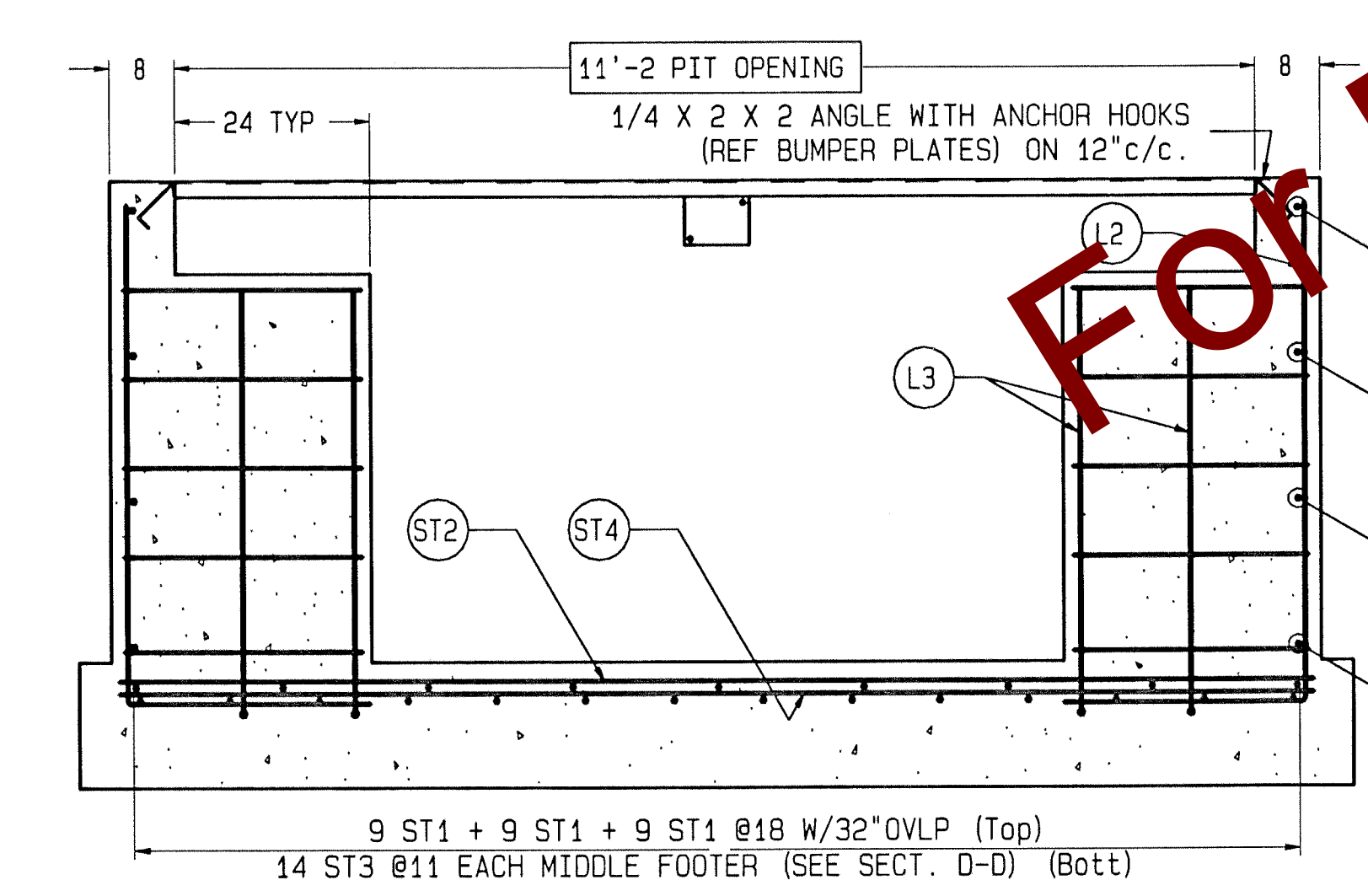
DETAIL ITEM T1



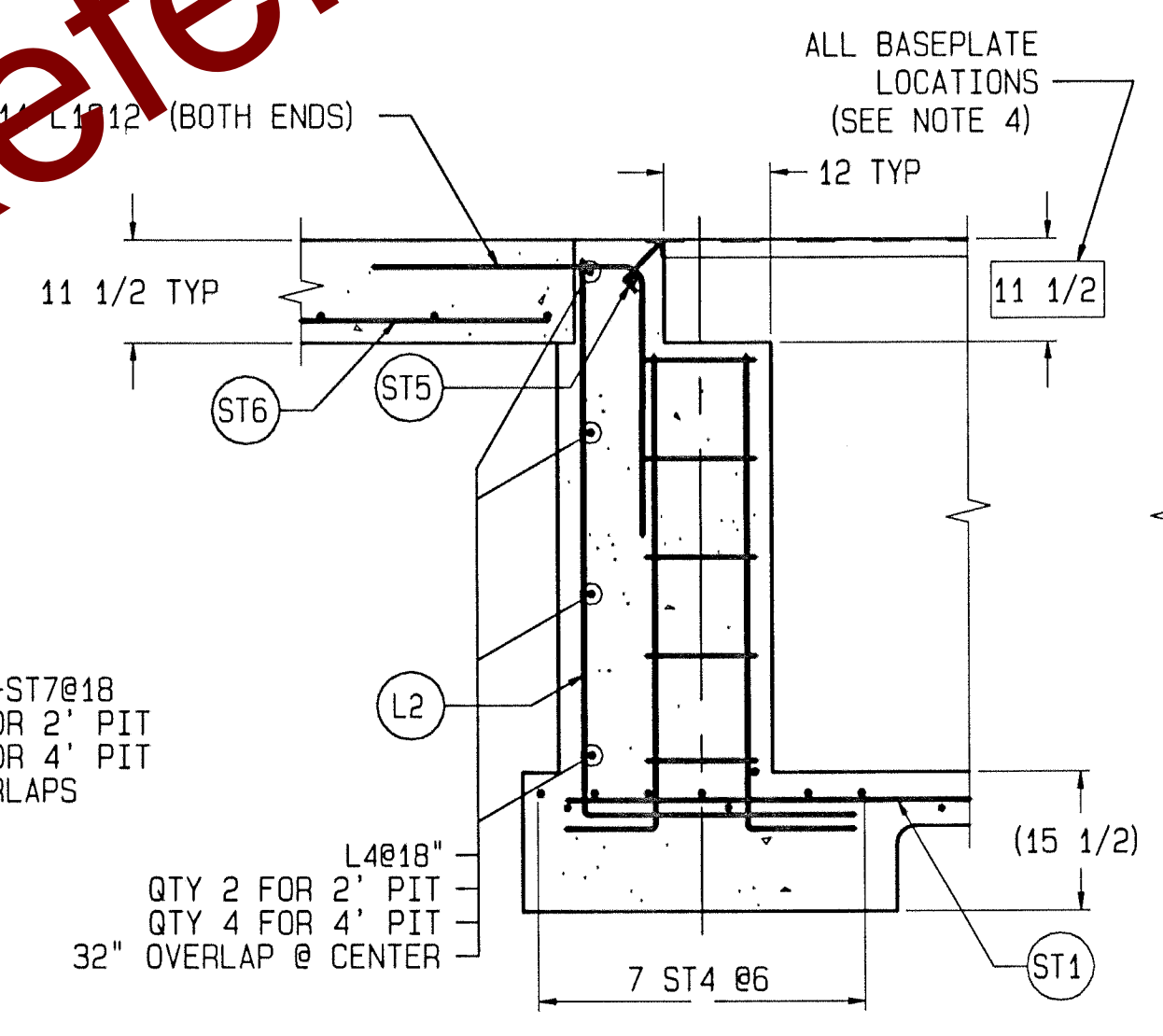
VIEW J-J



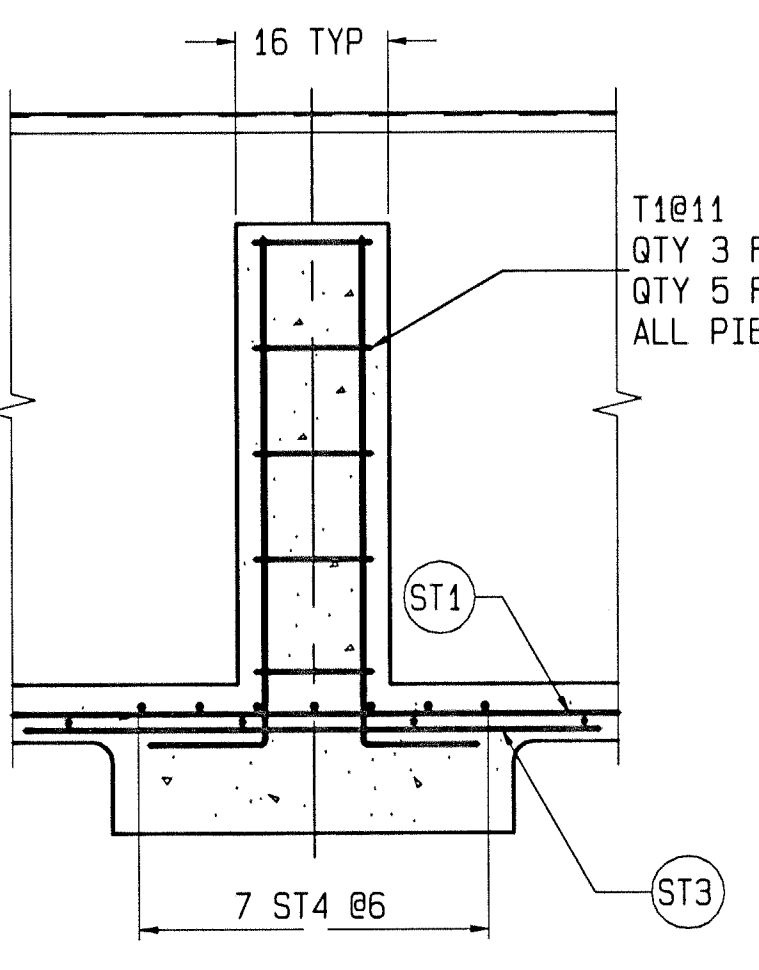
SECTION N-N



SECTION B-B
SCALE: 1/20



SECTION C-C
(TYPICAL END FOOTER)



SECTION D-D
(TYPICAL MIDDLE FOOTER)
(SINGLE BASEPLATE)

REINFORCING STEEL SCHEDULE (A.S.T.M. A-615 GRADE 60)						
COLD FORM BARS TO INSIDE DIMENSIONS		A B				
SYM	QTY	SIZE	LOCATION, DIRECTION	A	B	WGT
ST1	27	#4	FLOOR, LONG.	28'-7"		515
ST2	56	#4	FLOOR, LATERAL	12'-8"		474
ST3	56	#4	FOOTERS, LONG.	5'-0"		187
ST4	42	#5	FOOTERS, LATERAL	12'-8"		555
ST5	20	#5	APPROACH, LATERAL	10'-8"		223
ST6	22	#5	APPROACH, LONG.	9'-6"		217
L1	22	#5	APPROACH TO END TIES	2'-6"	2'-6"	115

COMMON TO BOTH 2' & 4'	ST7	12	#4	SIDE WALLS, LONG.	28'-3"		226
2' ONLY	T1	36	#5	(SEE DETAIL ITEM T1)	7'-4"		275
	L2	190	#4	WALL TO FLOOR TIES	2'-6"	3'-0"	698
	L3	48	#5	(SEE DETAIL ITEM T1)	1'-0"	2'-0"	150
	L4	8	#4	(CORNERS)	2'-0"	6'-10"	47

4' ONLY	ST7	24	#4	SIDE WALLS, LONG.	28'-3"		453
	T1	60	#5	(SEE DETAIL ITEM T1)	7'-4"		459
	L2	190	#4	WALL TO FLOOR TIES	2'-6"	5'-0"	951
	L3	48	#5	(SEE DETAIL ITEM T1)	1'-0"	4'-0"	250
	L4	16	#4	(CORNERS)	2'-0"	6'-10"	94

THIS DRAWING CONTAINS INFORMATION TO BUILD EITHER A 2' OR 4' NOMINAL CLEARANCE PIT FOUNDATION. CONTRACTOR MUST KNOW DESIRED DEPTH BEFORE ORDERING MATERIALS.

MATERIAL SUMMARY * & "Y" DIMENSION CHART		
NOMINAL CLEARANCE BETWEEN FLOOR AND SCALE	2'	4'
CONCRETE (CU. YDS.)	52	64
REINFORCING STEEL	3705	4516
Y1 (ELEVATION A-A)	2'-8 1/2"	4'-8 1/2"
Y2 MINIMUM (ELEVATION A-A)	4'-0"	6'-0"

* QUANTITIES GIVEN ARE FOR FOUNDATION ONLY. IF CONCRETE PLATFORMS ARE USED, REFER TO GENERAL LAYOUT DRAWING FOR DECK CONCRETE AND REINFORCING STEEL QUANTITIES & SPECS.

NOTES:

- 1) USE MINIMUM 3000 PSI STRENGTH CONCRETE AT 28 DAYS WITH 5-7% AIR ENTRAINMENT.
- 2) USE MINIMUM 60KSI YIELD DEFORMED REINFORCING STEEL. REBAR MINIMUM DEPTH OF COVER SHOULD BE IN ACCORDANCE WITH THE LATEST ACI BUILDING CODE REQUIREMENTS FOR STRUCTURAL CONCRETE (ACI 318-SECTION 7.7), UNLESS OTHERWISE SPECIFIED.
- 3) FOUNDATION REQUIRES 2000 PSF RATED SOIL.
- 4) TOP OF CONCRETE AT BASEPLATE LOCATIONS TO BE LEVEL AND IN ONE PLANE $\pm 1/8"$
- 5) DIAGONAL MEASUREMENTS ENDWALL TO ENDWALL MUST BE EQUAL WITHIN $1/2"$.
- 6) BASEPLATE ANCHORS SUPPLIED BY METTLER-TOLEDO. USE BASEPLATES AS TEMPLATES TO LOCATE ANCHORS DURING SCALE INSTALLATION.
- 7) RAMP LENGTH: -PER LOCAL REGULATIONS ($1/2"$ SLOPE PER FOOT TYPICAL)
- 8) BOTTOM OF FOOTERS MUST BE BELOW LOCAL FROSTLINE.
- 9) CONTRACTOR SUPPLIES:
 - EXCAVATION
 - CONCRETE AND FORMS
 - REINFORCING STEEL
 - 1 1/2" DIA CONDUIT
 - CURB ANGLE ASSEMBLIES (SECT B-B)
 - BUMPER PLATE ASSEMBLIES (VIEWS J-J & N-N)

DRAWING IS TO SCALE ONLY WHEN BORDER MEASURES 22-7/8" X 35" (FULL SIZE)

REV	CHANGE	BY	DATE	SCALE	1/50
A	REVISED REBAR SCHEDULE. INCREASED BASE SLAB	ALS	07/17/91	DATE	03/08/91
B	CORRECT SECTION B-B. REVISED REBAR SCHEDULE	RMR	10/28/91	DRN RMR	APP
C	ADDED 6" TO FOOTER AND CLR FOR FOOTER REBAR	ALS	06/22/93	TITLE	7560A/B FOUNDATION: PIT (2' OR 4' DP) 80x11
D	REMOVED NOTE #10 FROM NOTES	DGR	08/19/96		
E	UPDATE NOTES & GEOMETRY TO CURRENT STANDARDS	MOP	10/04/01		
UNLESS OTHERWISE SPECIFIED, ALL DIMENSIONS ARE IN INCHES, AND DIMENSIONAL TOLERANCES ARE:					THIS PRINT IS FURNISHED WITH THE UNDERSTANDING THAT THE ESSENCE THEREOF WILL NOT BE REPRODUCED IN WHOLE OR IN PART WITHOUT WRITTEN AUTHORIZATION OF METTLER-TOLEDO, INC. ALL DESIGNS ARE THE PROPERTY OF METTLER-TOLEDO, INC. AND WILL BE PROTECTED BY PATENTS.
FRACTIONAL DECIMAL ANGULAR					TC201573
+1/32 .XX +.02 .XXX +.005					REV E